

# LEWA ecofoam<sup>®</sup>

Testing system



## LEWA ecofoam<sup>®</sup> testing system

### The metering system for blowing agents in extrusion processes



The metering of blowing agent is of particular importance to guarantee the constant quality of the end product in extrusion processes. LEWA ecofoam testing system has been designed for all known blowing agents, incl. cooling device for CO<sub>2</sub> and explosion-proof design for combustible blowing agents.

#### Performance overview:

Pressure	up to 5,070 psig
Flow rate	depending on type of liquid (compressibility), e.g. up to 25.4 lbs/h CO <sub>2</sub> , 34.2 lbs/h Pentane or 44.1 lbs/h H <sub>2</sub> O

#### Method of operation:

The guide signal to control the diaphragm metering pump is linked to the extruder's speed. The metering pump delivers the blowing agent into the plastic melt in proportion to the extruder's speed. The controller LEWA smart control conducts a consistent plausibility check between the flow meter's signal and the guiding signal and adjusts the flow rate via speed control of the drive motor in order to meet the process requirements.

#### Main components of LEWA ecofoam testing system:

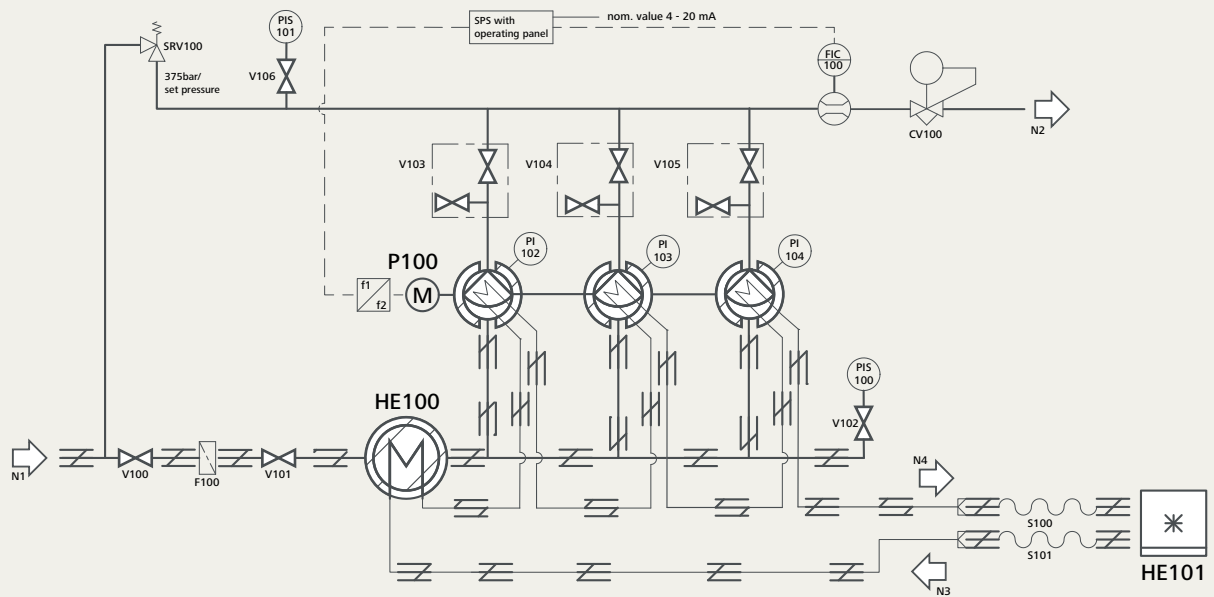
- LEWA diaphragm metering pump (LEWA ecoflow LDB3), incl. motor 1 HP, EEx de IIC T4
- Control cabinet with LEWA smart control (metering control)
- Heat exchanger in suction line, incl. tubing for coolant and insulation
- Cooling unit, if necessary
- Regulating valves for constant discharge pressure
- Venting valves for start-up
- Pressure relief valve for protection against overpressure
- Instruments:
  - Pressure gauges
  - Mass flow meter

The above components are piped and mounted on a common base frame. A specially developed controller LEWA smart control can be integrated in the base frame or delivered separately for installation in the customer's control room.

#### Renting conditions:

You can convince yourselves on the system's outstanding quality and the consistent and accurate metering of the propellant. The whole system can be tested for up to 6 weeks, after consulting us also longer, for a small fee.

## Flow diagram of LEWA ecofoam testing system



## Dimensions and electrical connecting data

### Dimensions:

- 47" x 35" x 75" (L x W x H)
- Weight: appr. 1,102 lbs

### Electrical connection data:

- Power supply: 400 V
- Nominal current: 5.0 A
- Connected load: 3 HP
- Pre-fuse: 16 A

## Nozzle list

Number	Size (inch)	Pressure rating	Type	Description
N1	0.47x0.06	1,450 psig at 68.0°F	tube	Material supply: CO <sub>2</sub> at 50.0-104.0°F, e.g. 943 psig at 68.0°F
N2	0.47x0.08	5,800 psig at 68.0°F	tube	Process connection: CO <sub>2</sub> 25.4 lbs/h at 5,070 psig
N3	0.47x0.06		tube	Cooling water outlet
N4	0.47x0.06		tube	Cooling water outlet

**LEWA-Nikkiso America, Inc.**  
132 Hopping Brook Road  
Holliston, MA 01746, USA  
Phone: +1 508 429-7403  
Fax: +1 508 429-8615

**LEWA-Nikkiso America, Inc.**  
**Gulf Coast Sales & Service Center**  
2446 Greens Road  
Houston, TX 77032, USA  
Phone: +1 713 577-5392  
Fax: +1 713 577-5393

[sales@lewa-inc.com](mailto:sales@lewa-inc.com)  
[www.lewa-inc.com](http://www.lewa-inc.com)

Your local representative:

